

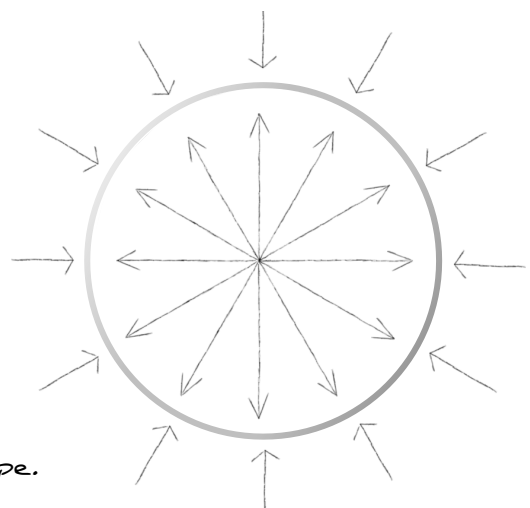
IPROX



The circle is the geometry in the nature that supports greater resistance.

All forces are uniformly distributed towards the center.

That is the reason why tree trunks and the strongest columns have cylindrical shape.



LUXINTEC

Robust and clean by nature

VERSIONS

600



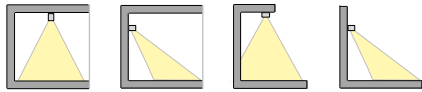
1200



1500

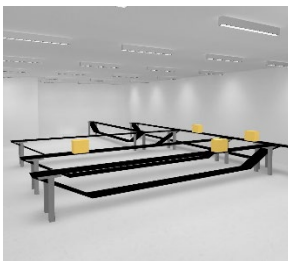


TYPES OF LIGHTING



APPLICATION AREAS

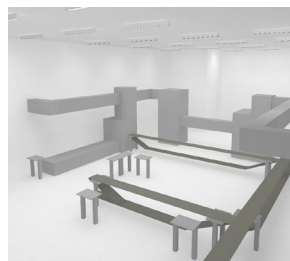
Dispatch areas with high humidity



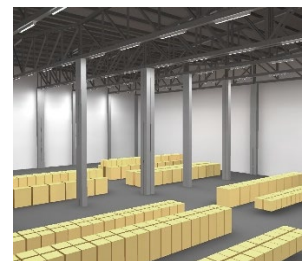
Transport infrastructures



Areas with high temperature and pressure cleaning



Low temperature warehouses



Outdoor parkings



Workshops



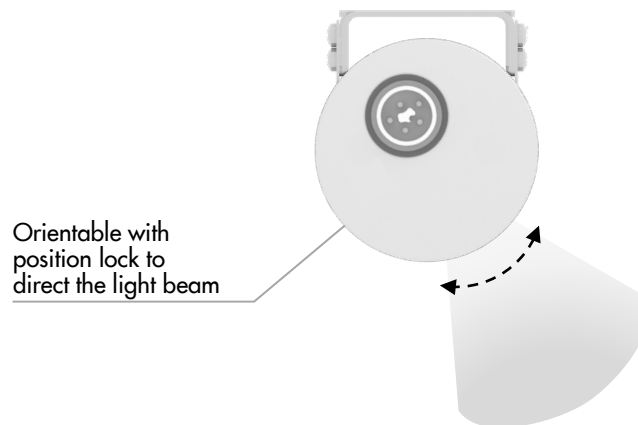
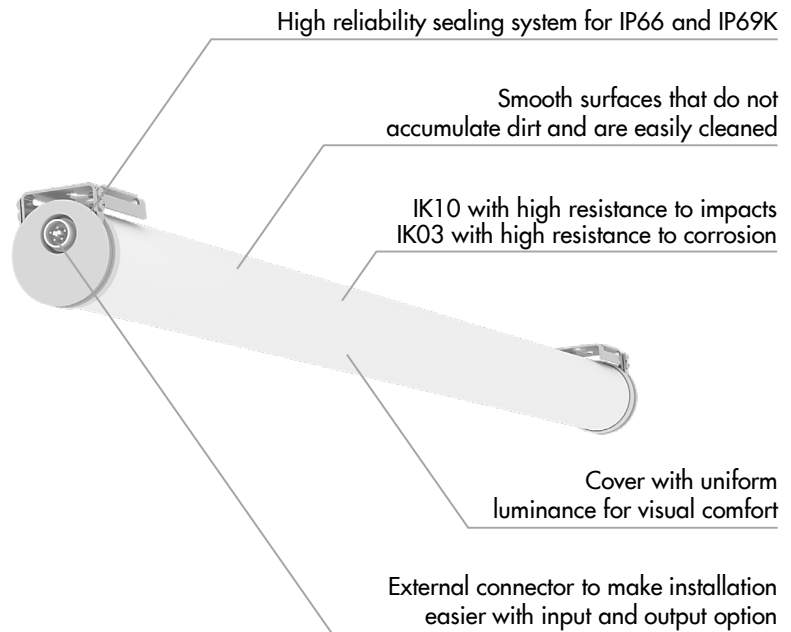
Canopies



Shelving corridors



- **SQUARE OPTICS** system to make the most of the light and reduce glare
- Approved materials for food industry according to HACCP and FDA recommendations
- **xTHERM** for high temperature environments and **constantLUM** to keep the luminous flux constant
- High efficiency up to 157 lm/W
- Interior aluminium heatsink
- Service life 85,000 hours L80B10
- CUSTOM OPTIONS:
 - Integrated movement detector
 - Class II
 - Special lengths

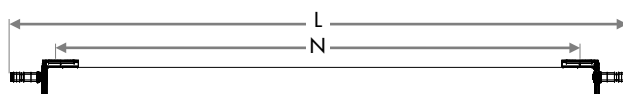


DIMENSIONS mm

C version. Quick input connection

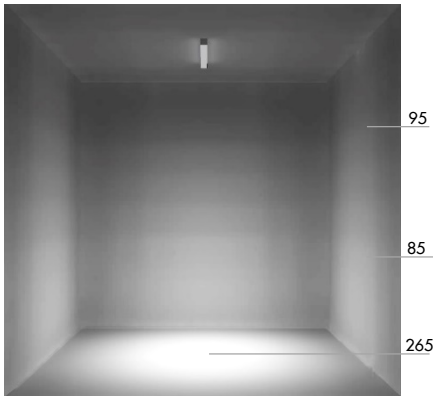


O version. Quick single-phase input and output connections

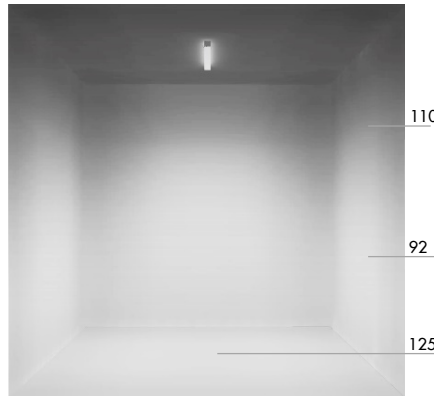


VERSION		L	W	H	N
600	C	740	75	87	600
	O	810	75	87	600
1200	C	1340	75	87	1200
	O	1410	75	87	1200
1500	C	1640	75	87	1500
	O	1710	75	87	1500

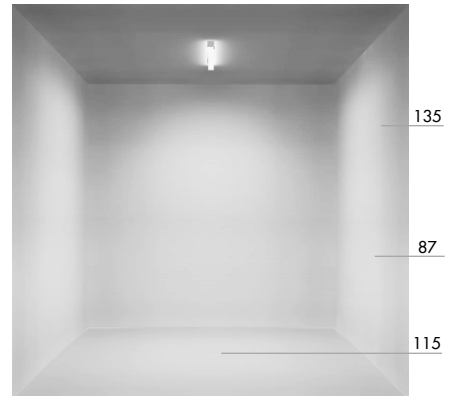
XQUARE OPTICS S4



XQUARE OPTICS Q9



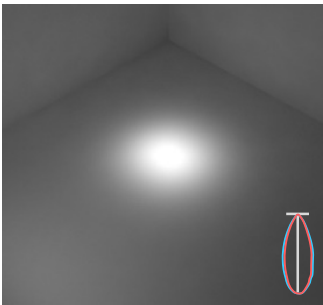
D OPTICS



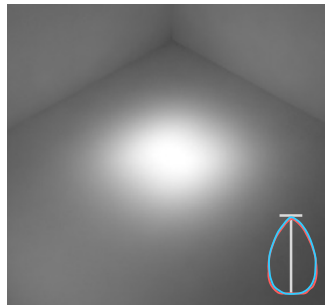
Values in lux at 5 meters height for IPROX 1 500 65W 5000K CRI 80+.

PHOTOMETRIES

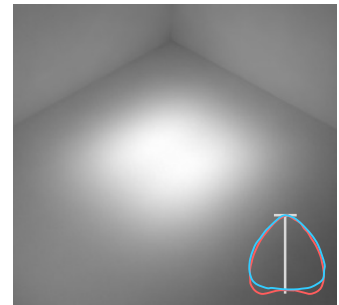
XQUARE OPTICS S4 40°



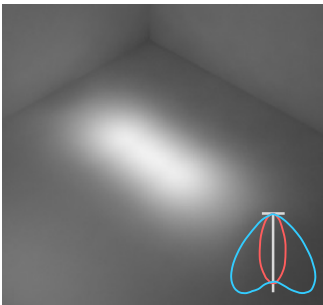
XQUARE OPTICS Q7 70° x 70°



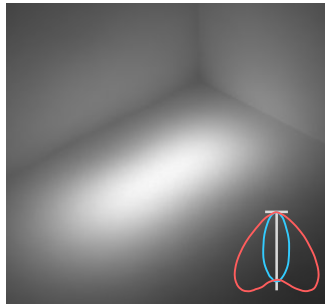
XQUARE OPTICS Q9 90° x 90°



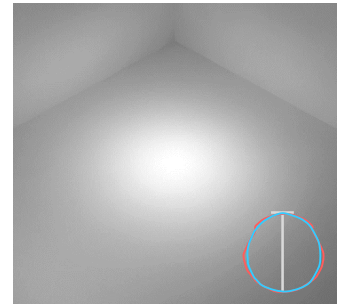
XQUARE OPTICS R4L 40° x 90°



XQUARE OPTICS R4T 90° x 40°



D 110°



Isolux curves: — 0° - 180° — 90° - 270°

LUMINOUS FLUX

VERSION	POWER RATING (W)	4000K CRI 80+		5000K CRI 80+	
		LUMINOUS FLUX (lm)	LIGHTING EFFICIENCY (lm/W)	LUMINOUS FLUX (lm)	LIGHTING EFFICIENCY (lm/W)
IPROX 600 D OPTICS	22	2684	122	2876	131
	20	2881	144	3101	155
	38	4733	125	5062	133
IPROX 1200 D OPTICS	50	6092	122	6497	130
	31	4245	137	4560	147
	50	6300	126	6738	135
IPROX 1500 D OPTICS	65	7614	117	8121	125

OTHER CHARACTERISTICS

MATERIALS	Methacrylate with UV protection in IK03 cover Polycarbonate with UV protection in IK10 cover High density polyethylene with UV protection in lids Stainless steel in clip and fixation and orientation bracket Aluminium in heatsink
LIGHT SOURCE SERVICE LIFE	107,000 hours L80B50, 85,000 hours L80B10 Constant flux constantLUM optional for 85,000 hours
DRIVER SERVICE LIFE	> 100,000 hours
OPERATING AMBIENT TEMPERATURE	-20°C up to 40°C, without xTHERM -30°C up to 60°C, with xTHERM
COLOUR CONSISTENCY SDCM	< 3 MacAdam ellipses
TYPE OF POWER FEED	230VAC, 50..60Hz
RESISTANCE TO PEAK VOLTAGE	Up to 2 kV, without xTHERM Up to 4 kV, with xTHERM
POWER FACTOR	> 0.95
WEIGHT	1.3 Kg 600 version 2.2 Kg 1200 version 2.6 Kg 1500 version

WEB PRODUCT CONFIGURATOR

REFERENCE CODING

	REF.	DESCRIPTION	AVAILABLE FOR
01	MODEL	IRM	IPROX M
02	LENGTH	6	600
		12	1200
		15	1500
03	IP RATING	T	IP66
		K	IP69K
04	IK RATING	3	IK03
		1	IK10
05	POWER RATING	20	20W
		22	22W
		31	31W
		38	38W
		50	50W
		65	65W
06	ELECTRICAL EQUIPMENT	F	Non-dimmable
		H	Non-dimmable with xTHERM and constantLUM
		D	DALI dimmable
		G	DALI dimmable with xTHERM and constantLUM
		PF	With non-dimmable detector
07	EMERGENCY	0	Without emergency light
		1	Emergency light 1h
08	LIGHT COLOUR	4	4000K
		5	5000K
09	CRI	A	80+
10	OPTICS	D	Diffuse
		S4	XQUARE OPTICS ~ 40°
		Q7	XQUARE OPTICS ~ 70° x 70°
		Q9	XQUARE OPTICS ~ 90° x 90°
		R4L	XQUARE OPTICS ~ 40° x 90°
R4T	XQUARE OPTICS ~ 90° x 40°		
11	CONNECTION	C	Quick input connection
		O	Quick single-phase input and output connections

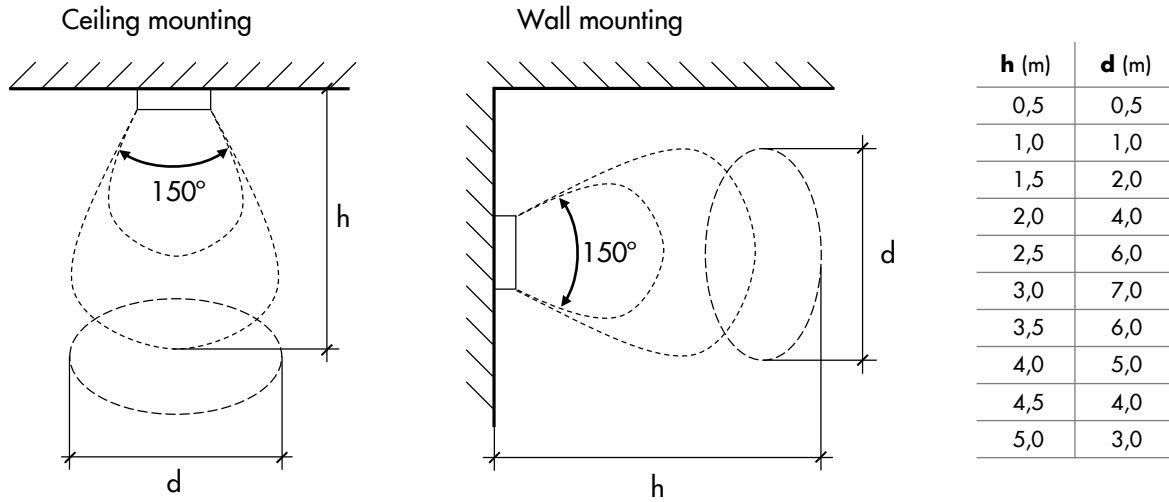
i Other customised features under request

There is an option to incorporate a movement and daylight detector inside the luminaire with the following setups.

- Bright out function. The luminaire is off if daylight is detected with a lux level over the configured value.
- Delay time.
- Detection range.

The maximum mounting height for proper detection is 5m.

DETECTION RANGE



ACCESSORIES

REF.	DESCRIPTION	AVAILABLE FOR
AFV0035	KIT clip supports safe retention IPROX	All