

5 YEARS WARRANTY

# SEAGULL INSTALLATION GUIDE

READ THE INSTRUCTIONS CAREFULLY BEFORE STARTING

IP40

RoHS Compliant



INSIDE THE BOXES

TRUNKING RAIL      LIGHT MODULE      POWER FEEDER

NEEDED FOR MOUNTING

LINEAR TRUNKING LED LIGHTING SYSTEM

| TRUNKING RAIL DIMENSIONS |       |       |
|--------------------------|-------|-------|
| L, mm                    | W, mm | H, mm |
| 857   2571   4285        | 57.5  | 40.0  |

| LIGHT MODULE DIMENSIONS |            |       |       |
|-------------------------|------------|-------|-------|
| LIGHT MODULE            | L, mm      | W, mm | H, mm |
| Optical                 | 857   1714 | 57.5  | 41.5  |
| Difussed                | 857   1714 | 57.5  | 51.5  |

| POWER FEEDER DIMENSIONS   |       |       |       |
|---------------------------|-------|-------|-------|
| FEEDER                    | L, mm | W, mm | H, mm |
| Optical                   | 202   | 57.5  | 75.5  |
| Difussed                  | 202   | 57.5  | 85.5  |
| Universal (trunking only) | 857   | 57.5  | 40    |

## WARNING

**! Turn power off before inspection, installation or removal.**

- Installation should be performed only by qualified electrician.
- Properly ground electrical enclosure.
- Perform installation in dry location only.
- Luminaire may fall down if not installed properly.
- Avoid direct eye exposure to the light source while it is on.
- For indoor use only.
- Do not operate luminaire with damaged parts.
- The manufacturer shall not be liable for any damage resulting from inappropriate modifications to the luminaire or faulty installation.

*If you have any questions, contact the manufacturer.*

© 2021, All rights reserved BaltLED, UAB. Specifications are subject to change without notice.

5 YEARS WARRANTY

# SEAGULL INSTALLATION GUIDE

IP40

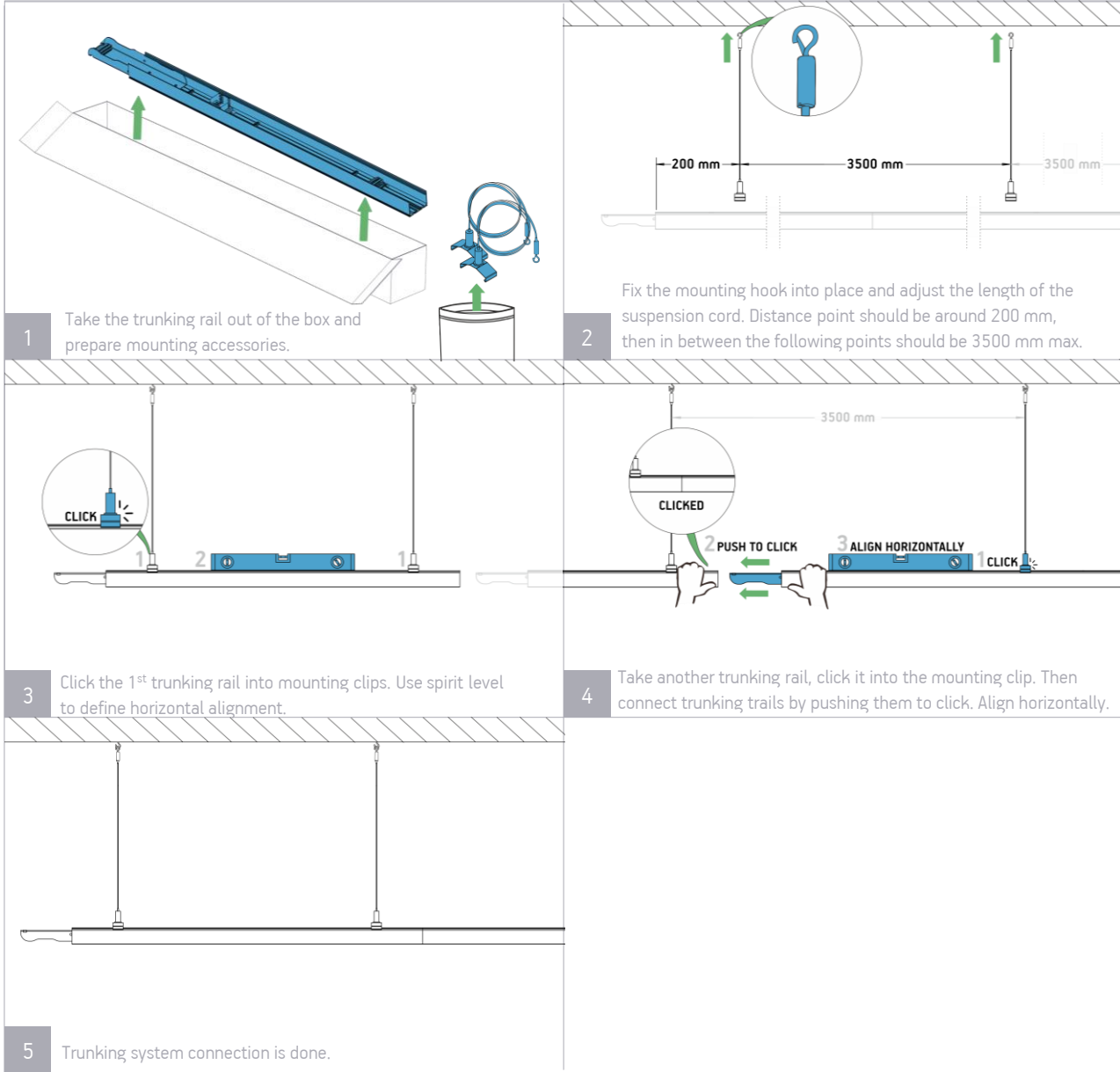
RoHS Compliant

CE

WEEE

F

## 1. TRUNKING



5 YEARS WARRANTY

# SEAGULL INSTALLATION GUIDE

IP40

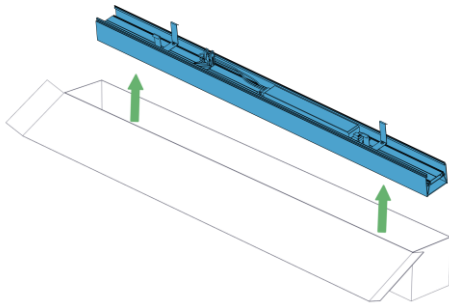
RoHS Compliant

CE

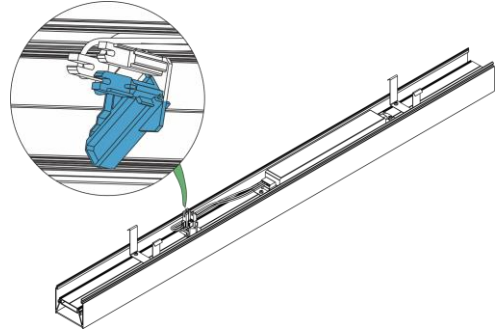
WEEE

F

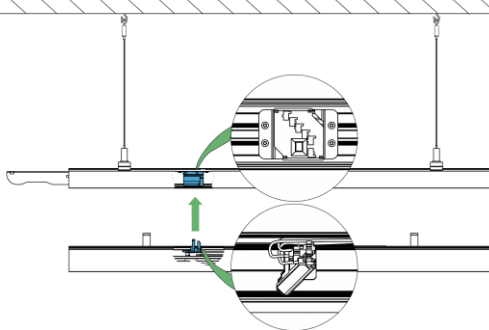
## 2. LIGHT MODULE



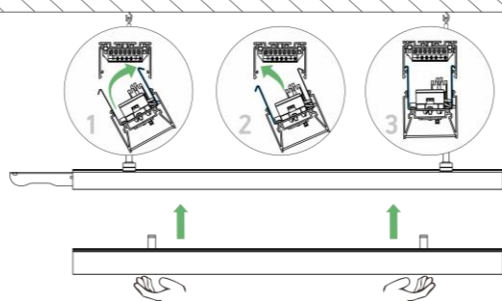
1 Take the module out of the box.



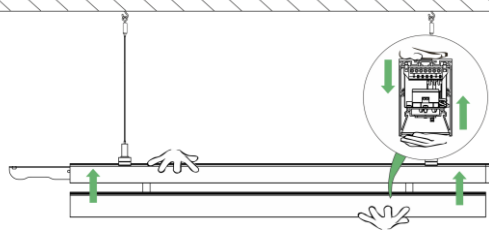
2 Slide knob to select phase L1 | L2 | L3 | L4 | L5 (modules can come with 3 or 5 phases).



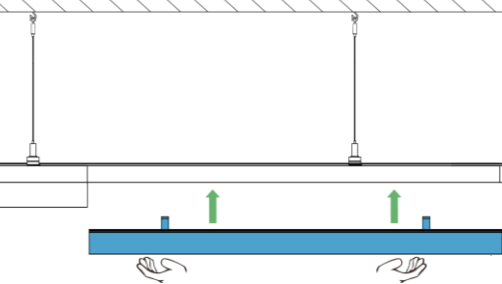
3 Before clicking the module into trunking rail, make sure male and female connectors are in the right position.



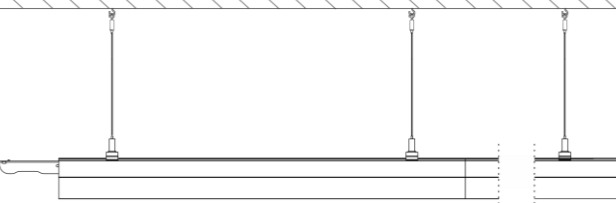
4 Rotate the module to hang the further safety springs on the trunking rail. Then rotate the module back to hang the rest safety springs on the trunking rail.



5 Click the module into trunking rail by holding module with one hand and trunking rail with another.



6 Click in all the light modules and blackouts (if any) according to the previous steps.



7 Light modules connection is done.

## 3. CONNECTING FEEDER

### 3.1. 857 MM POWER FEEDER (TRUNKING ONLY)

**1** Take the power feeder, end caps (x2) and screws (x4) out of the box.

**2** Fix the end cap with screws to the last module in the line. For fixing use TORX T10.

**3** Put the input cable trough the top of the feeder and secure it with cable tie. Strip the wires.

**4** Push each terminal's pin while putting in the wires to appropriate terminal block's line. **PUSH THE PIN**

**5** Push each terminal's pin while putting in the wires to appropriate terminal block's line. **CLICKED**, **ALIGN HORIZONTALLY**, **PUSH TO CLICK**. A 200 mm distance is indicated between the end cap and the terminal block.

**6** Connect the light module to the power feeder. (for instruction, see page 3).

**7** Fix the end cap with screws to the power feeder module. For fixing use TORX T10.

**8** Seagull lighting system is ready to use.

5 YEARS WARRANTY

# SEAGULL INSTALLATION GUIDE

IP40

## 3. CONNECTING FEEDER

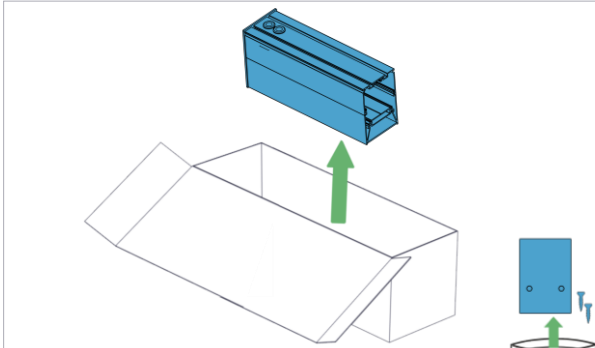
### 3.2. 202 MM POWER FEEDER

RoHS Compliant

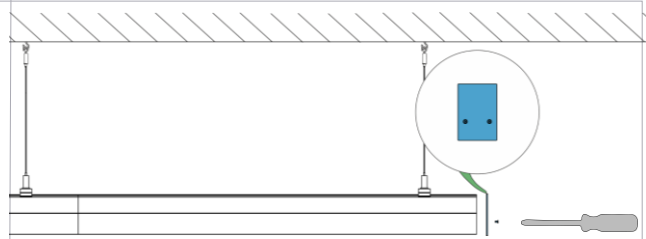
CE

WEEE

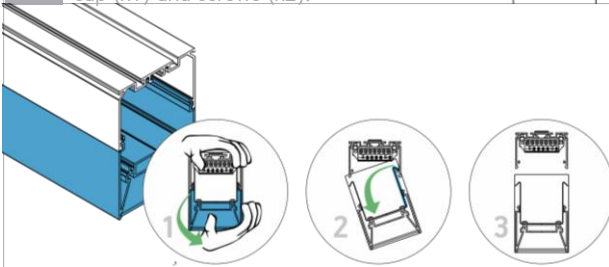
F



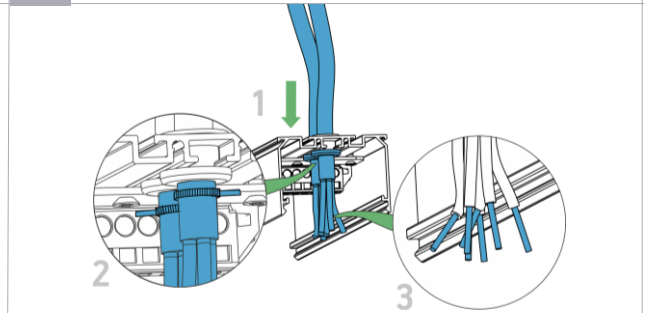
1 Take the power feeder out of the box, end cap (x1) and screws (x2).



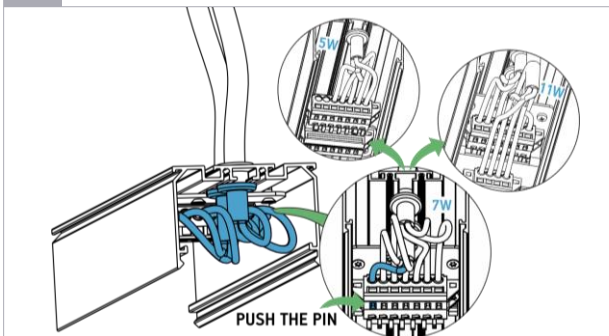
2 Fix the end cap with screws to the last module in the line. For fixing use TORX T10.



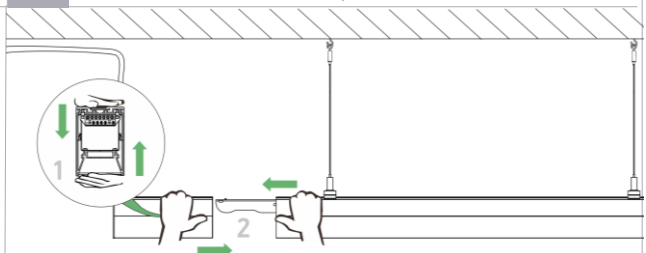
3 Separate power feeder. Hold the trunking firmly with one hand and with another rotate the light module until the safety springs clicks out.



4 Put the input cable through the top of the feeder and secure it with cable tie. Strip the wires.



5 Push each terminal's pin while putting in the wires to appropriate terminal block's line.



6 Join the power feeder. Then connect the joined power feeder with the trunking system (hands on the top) by pushing each other until it clicks.



7 Seagull lighting system is ready to use.

### QUANTITY OF LUMINAIRES PER CIRCUIT BREAKER

| POWER, W | LUMINAIRE QTY PER 16A TYPE C CIRCUIT BREAKER | LUMINAIRE QTY PER 25A TYPE C CIRCUIT BREAKER |
|----------|--|--|
| 20       | 70   | 100  |
| 42       | 38   | 57   |
| 65       | 35   | 42   |
| 82       | 27   | 39   |
| 100      | 25   | 37   |
| 115      | 25   | 37   |